

**DYNAMAX** 

WE'RE PERFORMANCE DRIVEN



Grand Sport Ultra

At **Dynamax** reaching a higher standard is not an option,  
*Grand Sport Ultra - Model 450UL, shown with the Russet Ridge exterior paint scheme. Standard roof mounted power awnings integrate*





it's a tradition.

*smoothly with Grand Sport Ultra's body lines, while enhancing outdoor comfort.*



## Contents

### A Higher Standard

- 4-5 Legendary Dynamax Attention to Detail
- 6-7 Extraordinary Living Space
- 8-9 A Class A Experience in a Super C Package
- 10-11 Everything In Its Place
- 12-15 Understated Impact
- 16-17 An Executive Coach Customized from the Ground-Up

### Construction Features

- 18-19 Durable By Design - Steel Frame Construction
- 20-21 Freightliner Service Network
- 22 Freightliner and Cummins - A Powerhouse of Engineering
- 23 Crafted to Perfection
- 24-25 Seven Step Paint - From Start to Finish
- 26-27 Floorplans

### Features and Options

- 28-29 Standard Features
- 30-31 Standard and Optional Features

*A sleek aerodynamic front transition cuts through air more efficiently than a bus style motorhome, providing better fuel economy and handling. All models are equipped with integrated, roof-mounted power awnings and slide toppers, painted to match the body. Other standard features include a in-motion satellite dome, low profile roof air conditioners and chrome dual trumpet air horns. Model 450UL is shown in Russet Ridge paint scheme.*





# A Motorhome Designed with **Legendary** Attention to Detail

*We specialize in engineering motorcoaches designed to fit your lifestyle.*



From the day the Dynamax brand originated, a progressive vision has set these prestigious vehicles apart. Built to perform at a higher standard of excellence that goes beyond what meets the eye, Dynamax is driven by an unending pursuit for precision and quality inside and out. Over the years, legendary product integrity and customer loyalty have combined to build a powerful brand. The foundation for success has been simple.

Start with a solidly engineered OEM cab chassis platform and concentrate on building a cohesively engineered muscle car style coach on it. At Dynamax there are no corners to cut – only curves. Dynamax delivers with revolutionary radius curved sidewalls, eye catching paint schemes and styling that flows with the OEM body lines. The resulting product is visually appealing and structurally solid, with aerodynamic properties that improve maneuverability for a better driving experience.



*Model 450UL  
shown in Russet  
Ridge paint  
scheme.*





Loaded with standard amenities, the Grand Sport Ultra Model 450UL is a comfortable and luxurious retreat. Early American Cherry hardwood cabinets throughout the coach provide ample storage. Porcelain floor tiles are durable and denser per square inch, for years of trouble free elegance. Contrasting inserts accent this contemporary, diagonally laid floor design. An Ultra leather queen hide-a-bed sofa with an air mattress and flip-up foot rests offers additional guest accommodations, or a great place to rest while viewing the 40" LED/LCD TV. Convenient power day/night roller shades are controlled at the multiplex control panel. (Optional electric fireplace shown)



# Extraordinary Living Space

Experience a combination of beautifully crafted solid hardwood cabinetry and opposing slide outs for the ultimate in warmth and spacious living.

A Higher Standard



Model 450UL's well-planned slide out kitchen features contemporary stainless steel appliances, including: a residential size, three-door refrigerator with a pull-out freezer and water and ice in the door, a two-burner electric stove top, plus a versatile stainless steel, convection microwave oven with a range fan. Beautiful waterfall edged Corian® countertops and a high-rise faucet with a pull-out sprayer provide an easy care food prep area. A Fantastic fan with rain sensor and a remote control is also standard. (Optional stainless steel dishwasher shown)



# A Class A Experience In a Super C Package

These Super C motorhomes are built with a convenient, level walkway into the driver's cockpit, accented with aisle lights, and 7' ceilings for ease of movement throughout the coach. Driver and passenger seats swivel, and are mounted on Air Ride pedestals for comfortable integration with the living area. Diagonally laid porcelain floor tiles have keyed contrasting inserts.



*The Corian® dinette table includes an extension for additional seating, two residential chairs, plus two coordinating folding chairs. A 32" LED/LCD TV is included. Choose from the standard hardwood hutch or an optional electric fireplace (shown).*





A Higher Standard





## Everything In Its Place

Model 450UL's Early American Cherry hardwood bedroom is designed for maximized storage capacity. A single glance at the posi-lock push button latches indicates clothes are secured. Seasoned travelers appreciate the full wall mirrored closet with hanging wardrobe storage above, and abundant drawer storage below, along with easy to access under-bed storage with gas props.





*Opposing slide outs create plenty of room to move freely around this spacious, storage friendly bedroom. Corian® countertops and a 32" LED/LCD TV and Bose® Integrated sound system create ambience and appeal.*

*A great night's sleep comes easily in this walk-around queen bed slide with cross-flow ventilation windows. This Model 450UL bedroom has sumptuous Early American Cherry hardwood cabinets, two night stands and overhead storage. Lights out? Multiplex lighting controls are conveniently located just above the bed. Shown in Orient Coffee decor.*

*This private bathroom has a mirrored Corian® corner vanity and a well lit radius glass shower with a skylight.*





# Understated Impact

Dynamax is renowned for subtle elegance and head turning curb appeal. This optional 12-step paint process starts with six metallic paint colors: black, gold, silver, charcoal, burgundy and white, and is enhanced with an additional six coats of clear for a deep, rich exterior finish. Custom color combinations are available.



*Grand Sport Ultra Model 453UL is shown with our standard roof mounted power awnings and exterior entertainment center, plus optional full body paint.*





*Grand Sport Ultra Model 453UL is shown with Natural Cherry cabinetry and porcelain tile flooring in a diagonal pattern, in our classic Copper Mountain decor. An L-shaped expandable ultra leather sofa creates a versatile living space with plenty of room for everyone.*



## Convertible Luxury Living

Grand Sport Ultra Model 453UL is loaded with luxury amenities and is designed for flexible use. The unique L-shaped sofa tucks away to increase floor space or expands for additional sleeping accommodations.

*A 23 cu. ft. residential stainless steel refrigerator with a pull-out freezer lower drawer, plus water and ice in the door is standard on Model 453UL.*

*This stylish kitchen features a stainless steel, over-the-range convection microwave and a two-burner electric stovetop. A contemporary hand-laid glass mosaic tile backsplash accents the kitchen workspace.*







*This comfortable, pull out ultra leather L-sofa expands to increase seating and tucks away neatly when not in use. The drawer under the sofa also pulls out to create additional sleeping space. Designer valances and power day/night roller shades surround the dark tinted T-slider windows for plenty of privacy and ventilation. Both driver and passenger captain's chairs swivel around to face the living area, creating plenty of seating. Grand Sport Ultra's level floor walkway and 7' ceiling height make it easy to access the cockpit.*







*A dramatic overhead sculpted hardwood lighting fixture in both the living area and bedroom is edged with indirect LED lighting and features polished stainless steel with matching padded ultra leather inserts.*

## Maximum Style and Versatility

Dynamax continuously strives to create luxurious interiors with a range of floorplans that maximize livability and comfort. Grand Sport Ultra Model 453UL offers a luxurious master bath, plus a convenient half bath. Rich, solid hardwoods and sumptuous interior decors are a hallmark of Dynamax styling. Our design team is renown for exacting attention to detail, well planned storage space and top of the line amenities.



*This convenient half bath includes Corian® countertops with an attractive, hand laid glass tile back splash, a large medicine cabinet, light natural Cherry cabinetry and a macerator toilet.*

A Higher Standard



*Grand Sport Model 453UL's king bed master suite has an adjoining full size bath with a Corian® and porcelain tile shower plus a skylight. A stylish telescoping pocket door with fluted glass inserts provides privacy. Shown in Copper Mountain decor.*



# An Executive Coach **Customized** from the Ground – Up

You can take it with you! The ultimate day coach starts with solid Dynamax engineering for a smooth ride and unsurpassed craftsmanship topped with stylish amenities.



*This model 453UL Day Coach is shown with a custom full body paint scheme.*







Travel luxuriously...This custom Executive Day Coach features a glass mosaic backsplash and includes: a well-appointed wet bar with two bar stools, a built-in icemaker, a stainless steel, the three-door refrigerator with pull-out freezer has ice and water in the door.

Premium entertainment features include: a 55" LED/LCD TV with sound bar and powered subwoofer, a Blu-Ray DVD player, an in-motion satellite system, and a separate WiFi to create a built-in internet hotspot.



A room with a view. Ultra leather bench seating and diagonally laid porcelain tiles with keyed inserts set the tone for an elegant travel experience. Remote controlled day/night power shades provide privacy.



This private meeting room is complete with a second 55" LED/LCD TV, four plush, Ultra Leather swivel recliner captains chairs, two wall-mounted Mahogany stained solid Cherry hardwood flip-up tables with matching wainscot. A refrigerator in the meeting room adds convenience.



# Dynamax - Durable By Design

Getting you on the road for a worry free experience is what it's all about. All Dynamax products are backed up with the best warranties in the business.

All slide out walls are welded and laminated within the sidewall to insure that the contour is consistent.

Sidewalls and roof frames are constructed with heavy gauge 1½" x 1½" aluminum tubing. All through-wall and roof cut-outs are boxed in with aluminum tubing. (Most manufacturers install wood to rout out their openings; wood has a tendency to rot over time.)

Exterior storage compartments are powder coated, inside and out, to inhibit corrosion.

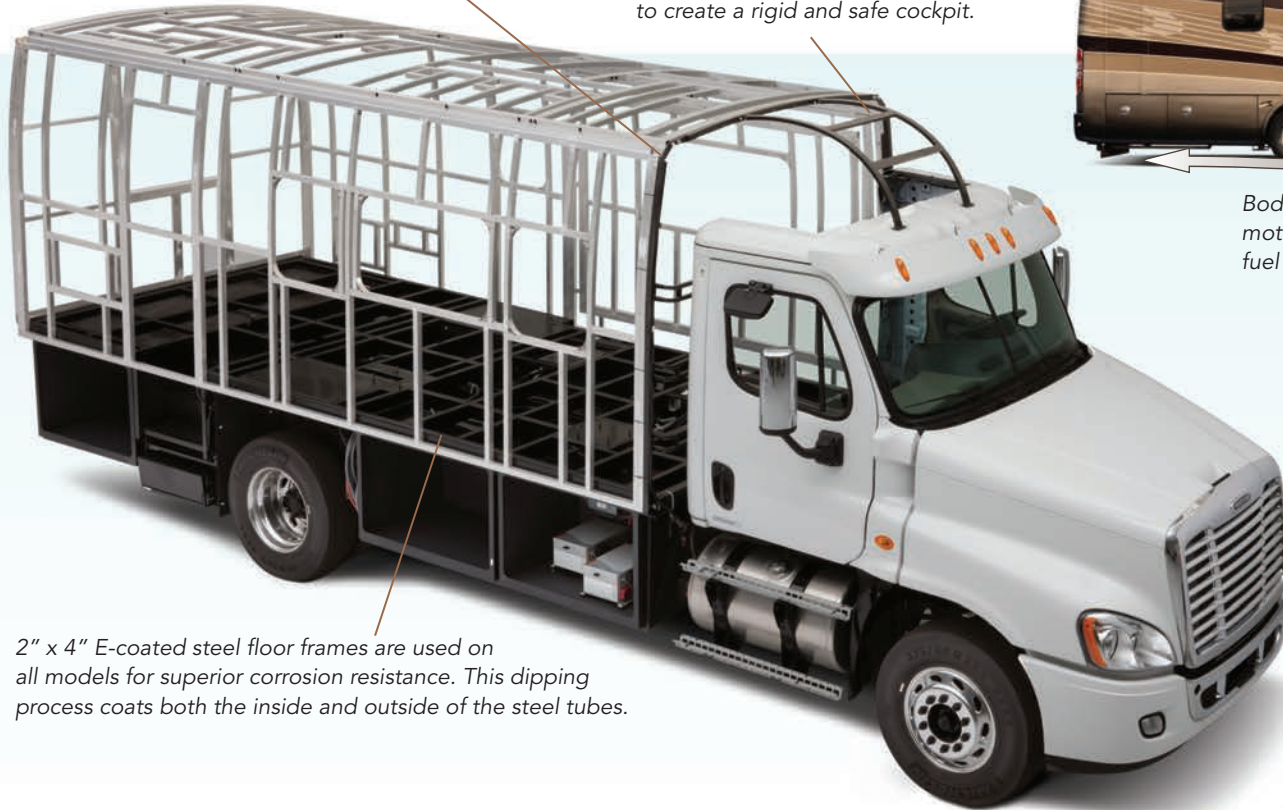
Dynamax installs commercial grade hitches. All Grand Sport Ultras are standard equipped with a 20,000 lb. hitch. A 40,000 lb. hitch is available as an option.

## Steel Frame Construction



Heavy gauge 1-1/2" x 1-1/2" steel B-Pillar with six steel ladder brackets tie the cab and body together.

1-1/2" x 1-1/2" steel frame connects the B-Pillar to the cab windshield posts to create a rigid and safe cockpit.



2" x 4" E-coated steel floor frames are used on all models for superior corrosion resistance. This dipping process coats both the inside and outside of the steel tubes.



Body contours channel air flow up and around the motorhome cutting through wind, while increasing fuel economy and optimizing aerodynamics.



Radiused, laminated one-piece fiberglass roof is standard on all models.

Construction Features



Easy access battery bank, leveling system controls and generator



Hydraulic HWH push-button self leveling system and rear air ride suspension



Dynamax automotive quality wire harnesses feature Deutsch heavy-duty, water tight bulk disconnects, Grand Sport Ultra is standard equipped with two 3,000 watt inverters.



Easy access water bay and 50 amp power land line

 Steel Frame Construction





**Easy Access** All Grand Sport Ultra Models are built on the Freightliner Cascadia chassis and feature a flip front end to allow easy servicing of the engine compartment.





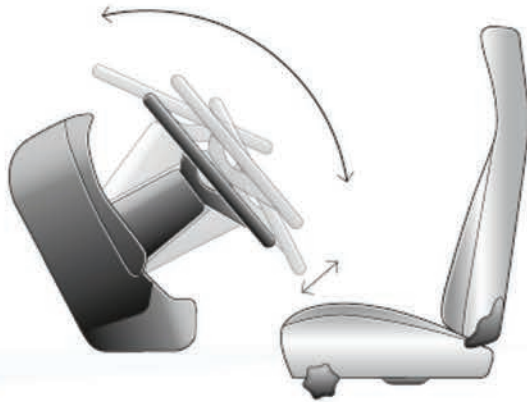
# Freightliner Service Network

Freightliner's industry leading support network begins with over 400 Freightliner dealer locations across North America. Plus, 162 Freightliner ServicePoint Facilities integrated with Travel Centers of America locations across the country offer certified repair and warranty work.

Freightliner's Customer Assistance Center provides a 24 hours a day, 7 days a week hot line available with a toll free number (1-800-FTL-HELP) for technical support, to arrange roadside assistance or towing services, or to locate the nearest dealer or service center.



Remove and replace gauges with ease.



With tilt and telescoping functions, the steering wheel provides a "just right" fit every time.

Construction Features



The cab design meets or exceeds stringent Swedish and European ECE R-29 crash test requirements for driver safety.



Durable, ergonomic door handles withstand the test of time.



After 220,000 lock-unlock-open-and-slam cycles in engineering tests doors close just like new.





# A Powerhouse of Engineering

Dynamax teams with Freightliner to build specialty vehicles that withstand the test of time.

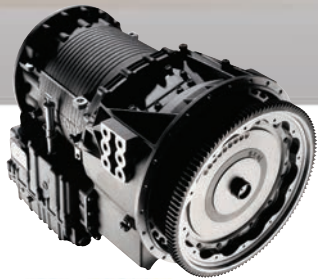
## Grand Sport Ultra: Available in 42' to 45' lengths

- Allison 4,000 TRV six speed automatic transmission
- 16,000 LB. Front axle
- 40,000 LB. R-Series Quiet Ride dual rear axles
- (2) 70 Gallon fuel tanks, 140 gallon capacity
- 13 Gallon diesel exhaust fluid tank



## Grand Sport Ultra: Available in 37' to 40' lengths

- Allison 4,000 TRV six speed automatic transmission
- 14,700 LB. Front axle
- 23,000 LB. R-Series Quiet Ride single rear axle
- (2) 70 Gallon fuel tanks, 140 gallon capacity
- 13 Gallon diesel exhaust fluid tank



### Transmission: Allison

- Smooth full power automotive shifts for fast acceleration and plenty of torque to handle steep grades with ease
- Transmission technology monitors RPM, load and road conditions
- Senses when to downshift to control speed on downhill grades



TRUCK RV SERIES



### Engine: Cummins ISX-15.0L Diesel

- 525 Horsepower @ 1,800 RPM
- 1,850 LB. FT. of torque @ 1,200 RPM
- Optional 550 or 600 horsepower @ 1,800 RPM
- 2,000 RPM governed
- 2010 EPA/CARB emission certification
- 275 Amp alternator



# Crafted to Perfection

Here's where old world craftsmanship meets cutting edge technology. Dynamax builds with rich natural solid hardwoods to produce the same exceptional cabinet construction found in finer homes.



*Raised panel door detail*



*Dovetail construction*



*Pocket screws for structural integrity*



*Hand rubbed finishes optimize grain definition*



*Clear coated natural hardwood doors bring out the luster*



*CNC routed custom Corian® countertops*



*Custom louvered doors*



*Dividing walls and cabinets are reinforced for added strength*



*Contemporary Posi-Lock hardware secures cabinets and drawers*





**Legendary 7-Step Paint** - *Three on-site 25' x 60' down draft bake booths can apply any custom paint scheme you can dream up.*



# 7-Step Paint From Start to Finish

Making a big statement is all in a day's work for Dynamax paint specialists. Virtually any logo, graphic or design can be digitally enlarged for precise masking and painting. This painstaking process is shown below. This prestigious 7-step paint process really shines with six coats of clear, sanded and buffed, for a distinctively polished finish.



*Digitally plotted, spray mask is carefully applied.*



*After masking to protect the previous coat, the unit is ready for black metallic base coat.*



*Black metallic base coat is applied.*



*Areas are masked off to add additional colors.*



*Unit is prepped and ready for final color.*



*Final base coat color has been applied; the unit will be unmasked to prepare for clear coat.*



**Russet Ridge**



**Quick Silver**



**Mocha**



**Optional Paint**

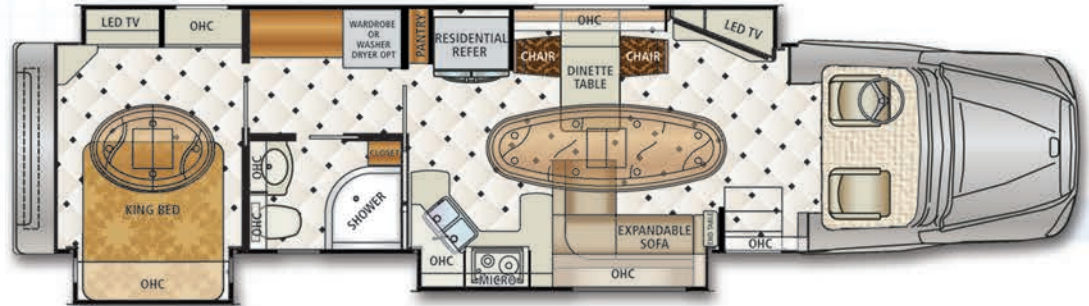
*Shown with roof mounted box awnings extended*





# Designed to Impress

Getting you on the road for a worry free experience is what it's all about. All Dynamax products are backed up with the best warranties in the business.



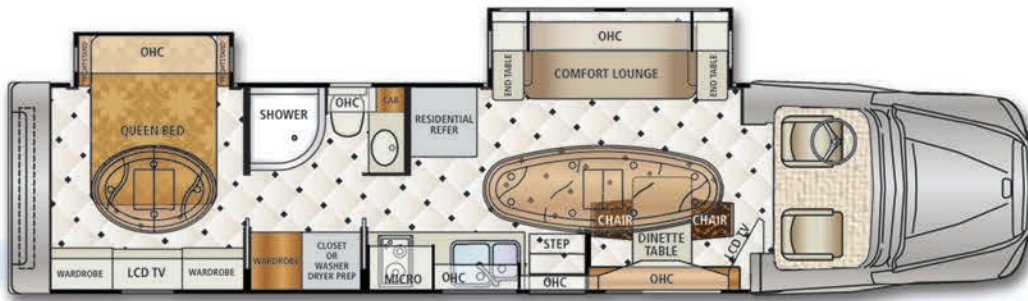
GC390UL



GC420UL

Key Dimensions:	GC390UL	GC400UL	GC420UL	GC450UL	GC453UL	GC453UL Day Coach
GVWR	37,600 lb.	37,600 lb.	54,000 lb.	54,000 lb.	54,000 lb.	54,000 lb.
GCWR	80,000 lb.	80,000 lb.	80,000 lb.	80,000 lb.	80,000 lb.	80,000 lb.
Overall Length	41' 9-1/2"	40' 2"	42' 9"	44' 11"	44' 11"	44' 11"
Exterior Width	8' 6"	8' 6"	8' 6"	8' 6"	8' 6"	8' 6"
Wheelbase	299"	280"	323"	323"	323"	341"
Overall Exterior Height (Includes Standard 15,000 BTU Roof Air Conditioner and or Dome)	12' 4"	12' 4"	12' 4"	12' 4"	12' 4"	12' 4"
Interior Height	7' 0"	7' 0"	7' 0"	7' 0"	7' 0"	7' 0"
Fuel Capacity	140 Gallons	140 Gallons	140 Gallons	140 Gallons	140 Gallons	140 Gallons
Water Capacities						
Fresh	110 Gallons	110 Gallons	110 Gallons	110 Gallons	110 Gallons	110 Gallons
Gray	52 Gallons	52 Gallons	52 Gallons	52 Gallons	52 Gallons	52 Gallons
Black	52 Gallons	52 Gallons	52 Gallons	52 Gallons	52 Gallons	52 Gallons
LPG Capacity: 48 Gallons/160 lb.	Optional	Optional	Optional	Optional	Optional	Optional





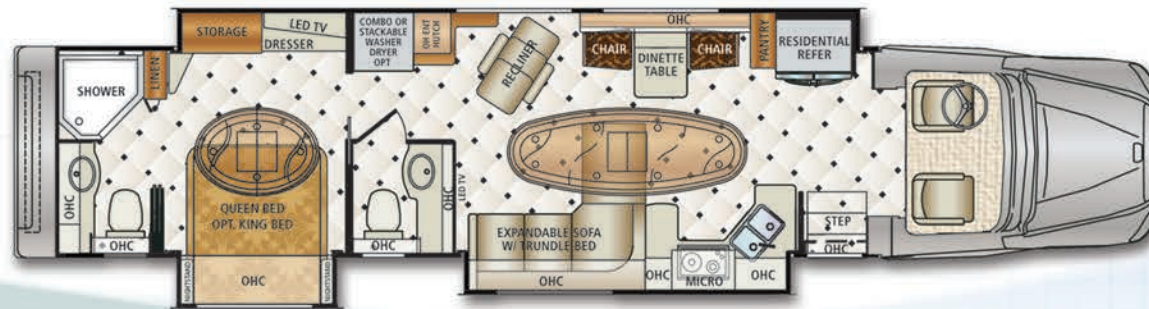
GC400UL



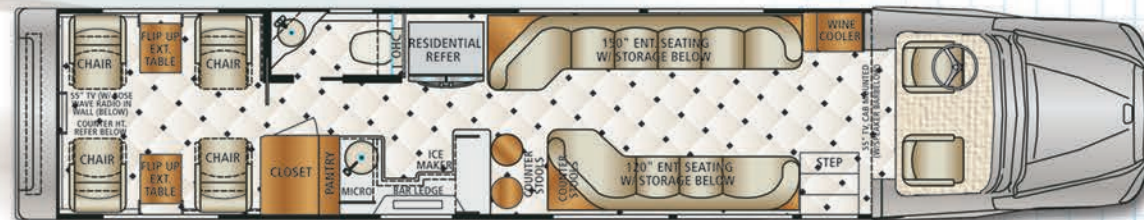
GC400UL Option



GC450UL



GC453UL



GC453UL - Day Coach



# Standard Features

Dynamax models are loaded with standard features for years of carefree travel.



Model 450UL shown in our full body Mocha paint scheme.

## Chassis Type: Freightliner Cascadia

- GVWR: Models 390UL & 400UL – 37,600 lbs.
- GVWR: Models 420UL, 450UL & 453UL – 54,000 lbs.

## Chassis Features:

- Cummins ISX – 15.0 L
- 525 Horsepower @ 1,800 RPM
- 1,850 LB/FT of Torque @ 1,200 RPM
- 2,000 RPM Governed
- 2010 EPA/CARB Emission Certification

## Engine Equipment:

- 275 Amp Alternator
- (3) Alliance Model 1231, Group 31, 12 Volt Maintenance Free Batteries w/3,375 CCA
- Chassis Battery Shut Off Switch in Cab Mounted by Drivers Seat
- Cummins 18.7 CFM Air Compressor
- Cummins Inte Brake Compression Brake – Low, Medium & High Retardation Levels
- Engine After Treatment Device, Automatic Over the Road Regeneration & Dash Mounted Regeneration Switch
- 13 Gallon Diesel Exhaust Fluid Tank
- 1,750 Square Inch Radiator
- 1,500 Watt/115 Volt Block Heater

## Transmission & Equipment:

- Allison 4,000 TRV Six Speed Automatic Transmission
- Push Button Electronic Shift Control, Dash Mounted
- Transmission Electronic Oil Level Check

## Front Axle, Suspension & Equipment:

- 14,700 lb. Front Axle (Models 390UL & 400UL)
- 14,600 lb. Taperleaf Front Suspension (Models 390UL & 400UL)
- 16,000 lb. Front Axle (Models 420UL, 450UL & 453UL)
- 16,000 lb. Taperleaf Front Suspension (Models 420UL, 450UL & 453UL)
- TRW TAS-85 Power Steering
- 2 Quart See Through Power Steering Reservoir

## Rear Axle, Suspension & Equipment:

- 23,000 lb. R-Series Quiet Ride Single Rear Axle (Models 390UL & 400UL)
- 40,000 lb. R-Series Quiet Ride Tandem Rear Axle (Models 420UL, 450UL & 453UL)
- 3.91 Rear Axle Ratio
- Airliner 23,000 lb. Rear Suspension (Models 390UL & 400UL)
- Airliner 40,000 lb. Rear Suspension (Models 420UL, 450UL & 453UL)
- Dual Air Rear Suspension Leveling Valves

## Brake System:

- Air Brakes w/4 Wheel ABS
- Wabco SS-1200 Plus Air Dryer w/Integral Air Governor and Heater
- Quick Disconnect Fitting w/Tire Inflation Kit

## Frame:

- 11/32" x 3-1/2" x 10-15/16" Steel Frame w/1/4" C-Channel Inner Frame Reinforcement (Models 390UL & 400UL)
- 7/16" x 3-9/16" x 11-1/8" Steel Frame w/1/4" C-Channel Reinforcement (Models 420UL, 450UL & 453UL)

## Fuel Tanks & Equipment:

- Left & Right Hand 70 Gallon Aluminum Fuel Tanks – 140 Gallon Capacity
- Fuel Filter/Water Separator w/Primer Pump
- Equiflo Inboard Fuel System
- Auxiliary Fuel Supply & Return Ports (Generator)

## Tires:

- Cascadia Single Rear Axle (Models 390UL & 400UL) – Front: Michelin XZA2 Energy 295/80R 22.5 16 Ply Rating – Rear: Michelin XZA2 Energy 295/80R 22.5 16 Ply Rating
- Cascadia Tandem Rear Axles (Models 420UL, 450UL & 453UL) – Front: Michelin XZA2 Energy 315/80R 22.5 20 Ply Rating – Rear: Michelin XZA2 Energy 295/80R 22.5 16 Ply Rating

## Wheels:

- Accuride 22.5 x 8.25 Polished Aluminum Front Wheels (Models 390UL & 400UL)
- Accuride 22.5 x 9.00 Polished Aluminum Front Wheels (Models 420UL, 450UL & 453UL)
- Accuride 22.5 x 8.25 Polished Aluminum Rear Wheels (Only outside rims are polished – All Models)

## Cab Exterior:

- Aluminum Cab – Rubber Mounted
- Chrome Grille
- Premium Noise Abatement & Insulation – Hood, Tunnel & Fire Wall
- Clear Fog Lights Recessed in Bumper
- Daytime Running Lights
- Dual Chrome Heated & Remote Aerodynamic Mirrors w/Integral Convex & Dual Axis Mirrors

- Fiberglass Exterior Sunvisor
- Electric Power Windows w/Tinted Glass
- 2-Piece Tinted Curved Roped-In Windshield
- 8 Liter Windshield Washer Reservoir w/Fluid Level Indicator

## Cab Interior:

- Parchment/Shale Interior
- Premium Noise Abatement & Insulation on Cab Floor
- Dash Mounted Ash Tray & Lighter
- Roof Mounted Console w/2 Locking Doors
- Forward Waste Bin Mounted Beneath Dash
- Door Panels w/Integrated Storage Pockets
- 2 Cup Holders in Dash
- Dash Air Conditioning
- Door Activated Dome Lights/Red Map Lights & Foot Well Lights w/Dash Switch
- Electric Door Locks
- 3 Point Driver & Passenger Seat Belts w/Adjustable D-Ring
- Driver & Passenger Air Ride Seat Pedestals w/Swivel
- Adjustable Tilt & Telescoping Steering Column
- 4 Spoke 18" Leather Wrapped Steering Wheel

## Controls & Instruments:

- Wood Grain Instrument Panels
- Low Air Pressure Light & Buzzer
- Brake Application Air Gauge
- 2" Primary & Secondary Air Pressure Gauges
- Electronic Cruise Control w/Controls on Steering Wheel
- Driver Message Center w/2" x 20" Display
- 2" Electric Fuel Gauge
- Rear Axle Temperature Gauge (Second rear axle temperature gauge on models 420UL, 450UL & 453UL)
- Electronic Engine Coolant Temperature Gauge

- Engine Oil Temperature Gauge
- 2" Transmission Oil Temperature Gauge
- Electronic Outside Temperature Sensor Displayed in Driver Message Center
- Engine & Trip Hour Meter s Integral within Drivers Display
- Engine Oil Pressure Gauge
- Speedometer
- Electronic 3,000 RPM Tachometer
- 2" Turbo Air Pressure Gauge
- 2" Voltmeter
- Marker Lights Interrupter Switch
- Parking Brake System w/Warning Indicator
- Self-Cancelling Turn Signal Switch w/Dimmer, Headlight Flash, Wash/Wipe/Intermittent
- Factory Installed CB
- Multi-Band AM/FM/WB/CB Dual Antenna System

## Chassis & Driveline Warranties:

- Cascadia Base Warranty – One Year/100,000 Miles
- Cummins ISX – Two Years/250,000 Miles
- Allison Transmission 4000 TRV – Five Years/Unlimited Miles
- Towing & Roadside Assistance – One Year Unlimited Miles w/a \$550.00 Cap per Occurrence

## Exterior Features:

- Aerodynamic Front Transition w/Front Spoiler
- Molded Fiberglass Rear Cap w/Spoiler
- Steel Framed Entry Door w/Automotive 2-Stage Catch & Dead Bolt
- Quad LED Tail Lights
- 8 Docking Lights
- Full Body 4-Color Base Coat Clear Coat Paint Sanded & Buffed
- Diamond Shield Paint Protection
- HWH Four Point Fully Automatic Leveling System
- 20,000 lb. Hitch Capacity – 2,000 lbs. Tongue Weight 20,000 lbs. Pulling Weight



- 40,000 lb. Hitch Capacity – 4,000 lbs. Tongue Weight 40,000 lbs. Pulling Weight (Optional)
- 7-Way Flat Pin Tow Connection
- Dynamax Polished Stainless Steel Stone Guard
- Chrome Roof Mounted Dual Air Horns
- Full Length Roof Mounted Carefree of Colorado Awning on Entry Door Side – Painted Body Color w/Remote Control, Wind Sensor & LED Lighting
- Full Length Roof Mounted Awning Replicas on Drivers Side Painted Body Color
- Full Length Roof Mounted Carefree of Colorado Awning on Drivers Side – Painted Body Color w/Remote Control, Wind Sensor & LED Lighting (Optional)
- Window Awning on the on Drivers Side
- Slide Toppers on all Slide-Outs Painted Body Color
- Lighted Grab Handle w/Keyless Entry Controls Entry Door & Baggage Doors
- Double Power Step at Entry Door
- Exterior Wall Mounted Entertainment Center - 32" LED LCD TV & AM/FM/CD/DVD

### Basement Exterior Storage Compartments:

- Aluminum Insulated Compartment Doors
- Powder Coated Steel Compartment Boxes
- LED Lighting in all Compartments
- AC/DC Portable Refrigerator/Freezer on Slide Tray (Optional)

### Rear Trunk:

- Fiberglass Trunk Box
- (2) LED Lights
- Power & Remote Door Lock
- Convenient Storage Pouch on Rear Wall
- 120 Volt Receptacle
- 12 Volt Receptacle

### Interior Features:

- Interior Decors:
  - Caviar
  - Copper Mountain
  - Glacier
  - Orient Coffee
  - Saddle
  - Spice
- Deluxe Vinyl Padded Walls
- Deluxe Padded Ceiling
- Flush Mounted LED Lights
- Decorative Hardwood Ceiling Trim Package (Optional)
- Porcelain Tile Laid Diagonally w/Contrasting Keys in the Living Room, Kitchen, Bedroom & Bathroom(s)
- Heated Tile Floor in Living Room, Kitchen & Bathroom (Optional)
- Floor Lighting Through Out
- Hardwood Cabinets
  - Natural Cherry
  - Early American Cherry
  - Mahogany
- Deluxe Hidden Cabinet Door Hinges
- Posi-Lock Latches on Cabinet Doors
- 32" LED LCD TV in Front Living Area (Models 400UL, 420UL & 450UL)
- 40" LED LCD TV in Rear of Living Area (Models 420UL & 450UL)
- 55" LED LCD TV in Living Area (Models 390UL & 453UL)
- Sound System:
  - Bose Lifestyle (LS-235) Home Theater System
  - Sony Blu-Ray Player
- In-Motion Satellite
- Multi-Plex Lighting System
  - "All Off" Feature Located in Four Locations (Completely Shuts Down all 12 Volt Lighting by Holding One Button Down for a Few Seconds)
- Hardwood Overhead Cabinets in Cab Area
- Electric Fireplace ILO Hutch (Model 450) (Optional)
- Cross Flow Ventilation Windows in Living Room Slide Out (Models 400UL, 420UL & 450UL)

- Powered Day/Night Roller Shades
- Matching Fabric Valences
- Ultra Leather Hide-A-Bed Sofa w/Air Inflation Mattress & Flip-Up Foot Rests
- Free Standing Dinette w/Two Harwood Chairs & Two Folding Chairs w/Matching Fabric Cushions
- Booth Dinette ILO Free Standing Table & Chairs (Optional)
- Fantastic Roof Vent, Thermostatically Controlled w/Rain Sensor & Remote

### Safety Features:

- 12 Carbon Monoxide & LP Gas Detector
- Smoke Detector
- Fire Extinguisher

### Kitchen Features:

- Corian® Countertop w/Large Double Bowl w/Covers
- Single Handle Faucet w/Pull-out Sprayer
- Tile Backsplash
- Drawer Style Stainless Steel Dishwasher (Optional)
- Electric 2-Burner Glass Cooktop
- Over the Range Convection Microwave Oven
- 23 Cubic Foot Stainless Steel French Door Refrigerator, Pull-out Freezer Drawer w/Water & Ice Dispenser

### Bathroom:

- Corian® Lavatory Top w/Integrated Sink
- Corian® Shower Pan & Walls
- Skylight Over Shower
- Porcelain Macerator Toilet w/Two Stage Flush
- Washer/Dryer Prepped
- Combination Washer/Dryer Vented (Optional)
- Stackable Washer/Dryer Vented (Optional – Not Available on all Floor Plans)

### Bedroom:

- 32" LED LCD TV (Models 390UL, 400UL, 420UL & 450UL)

- 40" LED LCD TV (Model 453UL)
- Bose Solo TV Sound System
- Sony Blu-Ray Player
- Cedar Lined Wardrobe
- Queen Size Bed (60" x 74") w/Serta Trump Pillow Top Mattress & Corian® Nightstands
  - King Size Bed (66.5" x 75") w/Serta Trump Pillow Top Mattress & Corian® Nightstands (Optional on Models 390UL, 400UL, 420UL & 453UL)
  - King Size Bed (70" x 80") w/Serta Trump Pillow Top Mattress & Corian® Nightstands (Optional on Model 450UL)

- Storage Under Bed (N/A on 390UL)
- Decorative Headboard
- Fantastic Roof Vent, Thermostatically Controlled w/Rain Sensor & Remote
- Designer Bedspread & Pillows
- Cross Flow Ventilation Windows in Slide Out

### Driver & Passenger Compartment:

- AM/FM/CD/DVD/Satellite Radio Ready Equipped w/GPS Navigation & 7" Color Monitor
- Left, Right & Rear Color Cameras
- Auxiliary 12 Volt In- Dash Receptacle
- Brake Controller (Optional)
- Driver & Passenger Ultra Leather Captain's Chairs Equipped w/Adjustable Arms, Adjustable Lumbar & Heat

### Construction Highlights:

- Floor: Heavy Duty 4" E-Coated Steel Floor Frame
- Walls: Radiused & Laminated Side Walls
  - 1½" x 1½" Square Tube Aluminum Framed Side Walls w/All Thru Wall Cut Outs Framed w/Aluminum Tube
- Windows: Large Panoramic Dark Tinted Glass
- Roof: One Piece Radiused & Laminated Fiberglass Skin
  - Square Tube Aluminum Framed
- Insulation:
  - Floor: R-11 Solid Block Foam
  - Sidewalls & Roof: R-8 Solid Block Foam

- Steel Cage Connecting Cab to Sidewalls & Roof
- Living Room Slide Out – HWH Hydraulic (Models 400UL, 420UL & 450UL)
- Full Wall Slide Out – Electric (Models 390UL & 453UL)
- Kitchen Slide Out – HWH Hydraulic (Models 420UL, 450UL & 453UL)
- Bed Slide Out – HWH Hydraulic (All Models)
- Bedroom Wardrobe Slide Out – HWH Hydraulic (Models 420UL & 450UL)

### Utilities:

- Four 8D AGM Coach Batteries
- Coach 12 Volt Battery Disconnect
- Two 3,000 Watt Power Invertors
- 50 Amp Land Line w/Power & Remote
- Exterior Park Cable
- 12 KW Diesel Generator
- Automatic Generator Start System
- 12 Volt High Capacity Demand Water Pump
- Water Manifold System
- Power Retractable Fresh Water Hose
- City-Water Hook-Up w/Fresh Water Fill Valve
- Black Holding Tank Sprayer
- Hot & Cold
- Heated Black & Gray Holding Tanks
- Fresh Water Tank in Heated Environment
- Aqua-Hot Hydronic Heating & Hot Water System
- (2) 15,000 BTU Low Profile Roof Air Conditioners w/Heat Pumps (Models 390UL & 400UL)
- (3) 15,000 BTU Low Profile Roof Air Conditioners w/Heat Pumps (Models 420UL, 450UL & 453UL)





Grand Sport Ultra's professional cockpit is designed with lots of leg room. It includes power windows, cruise control, tilt and telescoping steering column, tinted glass and overhead directional reading lamps. The sophisticated 7" in-dash touch screen color display is satellite radio ready and controls the GPS navigation system, AM/FM/CD/DVD Bluetooth stereo system, plus the left, right and rear cameras.

## Standard Features

Dynamax models are loaded with standard features for years of carefree travel.



The Intellitec Multiplex Lighting System with memory is accessible from four locations throughout the Grand Sport Ultra. This convenient system allows the user to completely shut down all of the 12-Volt lighting, from ceiling to floor, by holding one button down for a few seconds. Controls are located in the overhead console cab area, entry door, bathroom (near the vanity sink), and in the bedroom overhead cabinet. The programmable scene module allows you to customize and group lighting zones for comfort, convenience, watching television, etc.



All Grand Sport Ultras are undercoated



Aqua-Hot hydronic heating system

### Choose the appropriate hitch for your towing needs



20,000 lb. hitch is standard.



The optional 40,000 lb. rugged rear hitch helps provide you with twenty tons of towing power.



Hydraulic leveling jacks. Four fully-automatic leveling jacks are standard on all Grand Sport Ultras.





Radiused steel framed, automotive style entry door with a two-stage catch and dead-bolt system provides extra security. A deluxe power entry step opens automatically with the entry door.



All Dynamax motorcoaches feature ample rear trunk storage and aerodynamic radiused sidewalls and roof.



All Grand Sport Ultras feature Universal remote controlled power awnings with a wind sensor. Passenger side is standard. Driver's side is optional.

The Grand Sport Ultra has eight docking lights to allow easy back up maneuvers. The Grand Sport Ultra 450UL features a dual rear axle for an even safer ride and rock solid towing stability.



Color side view cameras are painted to match the body color.



Tri-Mark keyless entry system



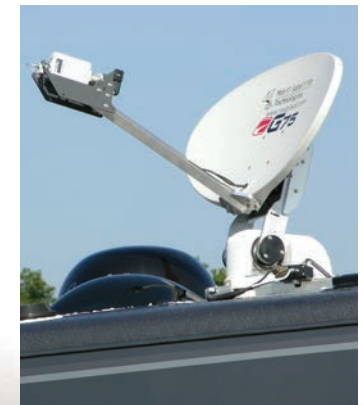
Grands Sport Ultra models are equipped with an exterior entertainment center that includes a 32" LED/LCD television, an AM/FM/CD/DVD stereo and speakers.

## Optional Features

As refined and well crafted as each Dynamax Motor Coach model is, all share the unlimited potential to become your ultimate dream machine.



Slide out compartments can house a grill, bikes, ramps, racks - anything you need.



Satellite for internet and dome for television on the go.

 Features



# Power, Prestige and Precision From Dynamax

Dynamax's reputation for elegantly styled body lines and head-turning paint is renown. Dynamax owners are indulged in first-class comfort with standout amenities that are second to none. Contemporary conveniences like brand name appliances and dramatic Multiplex lighting amp up the "ahh" factor.

For the motorhome enthusiast, the drive is as important as the destination. We start with a commercial grade chassis designed to exceed the comfort and safety demands of professional drivers. Our signature curved design handles cleanly, cutting cross winds for a smoother, more stable and aerodynamic ride. The hood flips forward for easy engine access, so service is a breeze. Dynamax offers up to 5' of steel frame forward of the passenger compartment for front crush zone protection. The result...total engineering synergy from one end to the other, mile after mile, year after year.

Experience the complete package. Luxury living inside with head-turning good looks outside – all in a fun to own package – hand crafted by Dynamax.

*This Grand Sport Ultra, Model 453UL is shown with our stunning, seven step full body paint scheme. (Optional)*



2745 Northland Dr. ■ Elkhart IN 46514  
888-295-7859 ■ [www.dynamaxcorp.com](http://www.dynamaxcorp.com)

Actual towing capacity is dependent on your particular loading and towing circumstances, which includes GVWR, GAWR and GCWR, as well as adequate trailer brakes. Please refer to the Owners Manual of your vehicle for further information. All illustrations and specifications contained in this literature are based on the latest product information at the time of publication. Dynamax reserves the right to make changes in prices, colors, materials, equipment and specifications at anytime, without notice, and assumes no responsibility for any error in this literature. All units are shipped F.O.B. point of manufacture. 10/13 ©2013 Dynamax



**Learn More**  
Scan this barcode using a QR Reader on your smart phone to learn more about Forest River.



A Berkshire Hathaway company.